

GSS REVIEW

Issue No. 31

Published by GSSArchitecture

Autumn 2011

Bishop's Palace conversion at Ely won by GSS



GSS partner Will Assheton with Tom Jagger and team leader Matthew Dunkley.

Following a competition between three practices The King's School at Ely has appointed GSSArchitecture to undertake a refurbishment and conversion of the former Bishop's Palace into a 6th form centre. The building will also provide residential accommodation for choristers and an international girls' boarding house. There will be sensitive additional single-storey extensions which will provide high-quality catering facilities and an additional dormitory.

The Grade 1-listed building, which is adjacent to Ely Cathedral, dates from as early as 1480, though there is a substantial seventeenth century part together with later extensions. It had previously been used as a Sue Ryder Home.

GSS partner Will Assheton explained, "Our substantial experience of both refurbishment and conservation work has

obviously stood us in good stead, and we were delighted to win this exciting project".

"To date we have been overseeing external fabric repairs and decoration. The main works are scheduled to commence in November, and the whole scheme should be completed in time for the start of the 2012 autumn term, with the 6th form centre being completed earlier."

From the Editor

Although the news came just too late for our last newsletter, I am delighted to be able to report that we were joint runners-up in the Business in the Community's national Awards for Excellence 2011 in the Work Inspiration category. The finals were held at the Royal Albert Hall, and my colleague Mark Stevens was also pleased to represent us at a reception in Downing Street with the Chancellor of the Exchequer. It was a tremendous achievement to reach the finals alongside such illustrious company as Allen & Overy, Channel 4 Television, GeoPost UK, Manchester Airport and Scottish Power. Details of our entry are at http://www.bitc.org.uk/resources/case_studies/afe_2751.html

I am also pleased to be able to announce our appointment to the Scape/EMPA framework, covering local authorities in Lincolnshire, Northampton, Rutland and Warwickshire. The framework will also be available to a wide variety of other public sector bodies.

More success, but this time at our Bristol office where both Holly Gwazdacz and Tom Freeman have recently qualified as Chartered Architects. Many congratulations to the pair of them.

As usual, this newsletter can only feature a small sample of our current projects, but we hope as always that it provides a fair reflection of our work. Our website at www.gssarchitecture.com is continually updated and provides further details of our practice as well as examples of many of our projects. Lastly, I'd like to express our grateful thanks to all our clients for their continuing support.

David Allsop

Go-ahead for £16m scheme at Durham



This illustration shows how part of the new extension to the Business School will look.

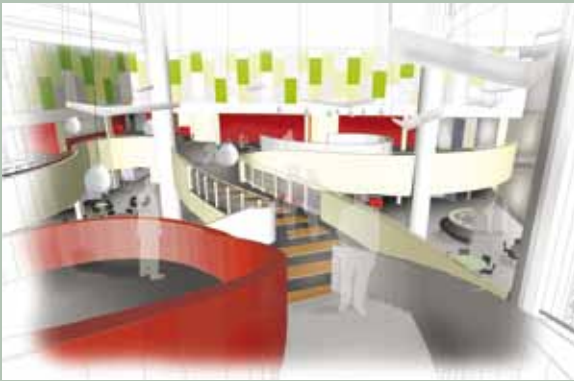
Planning approval has been received for a major expansion to the world-renowned Durham Business School at Durham University. The £16.5 million project, which has been designed by GSSArchitecture, will be based on a holistic environmental strategy where, according to needs and requirements, elements are added, remodelled or refurbished.

The key to the success of the project is the way in which the circulation space of the enhanced building becomes something other than just corridors. A permeable and interactive environment helps to promote both movement and activity. The GSS design team was led by partner-in-charge David Allsop, supported by partner Jonathan Hunter and architect James Elliott. A video of the proposed project can be seen on GSS's website at www.gssarchitecture.com.

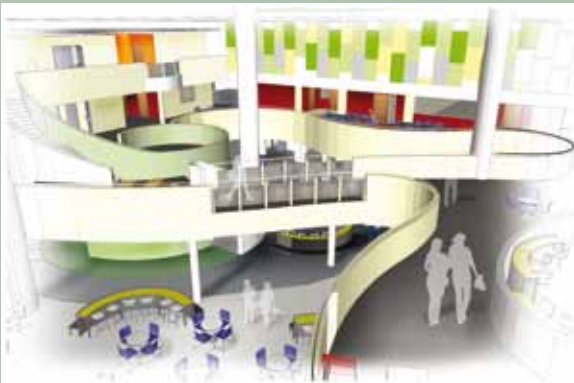
Elsewhere at Durham University several other projects are currently in the

construction phase. At Durham Castle a £3.6 million refurbishment project is under way that will see ensuite facilities added to the student accommodation as well as a major refurbishment of the Great Hall and the provision of a new servery. Work is also continuing on refurbishment and remodelling at the university's Palace Green Library, while other projects are on site at both Grey College and Collingwood College. GSS has also been appointed to undertake a feasibility study for updating and remodelling the Engineering and Computer Sciences Department.

Academy remodelling is under way



These illustrations show how the completed atrium will look.



GSS partner Tom Lyons and architect Jonathan Landeman discuss progress in the atrium.

All the steelwork is now in place in the atrium of the Malcolm Arnold Academy in Northampton, where GSS has been appointed by contractor Willmott Dixon to work on a £5.5 million internal refurbishment and partial remodelling. There will also be significant external works. The project is being undertaken for Northamptonshire County Council.

"One of the problems was that the atrium became too hot in summer and too cold in the winter," explained GSS partner-in-charge Tom Lyons. "The works include installing a mezzanine floor and pods, and various other internal alterations to turn this problem space into a large dynamic flexible learning environment. This will include creative zones, learning pods and social and food areas. Phase one works to the existing teaching spaces surrounding the atrium have now been completed."

Two of the redundant buildings of the former college - the old swimming pool and the Pearson building - are being demolished and will be replaced with landscaped areas. The project will also include a substantial enhancement to the academy's ICT facilities.

GSS has also been working with Willmott Dixon on the new £28 million Kettering Science Academy, acting as their design advisors, and working with their architects to develop the design and ensure that it meets all the necessary criteria.

Work starts on £5m commercial development

Construction has commenced on a £5 million commercial redevelopment scheme in west London (pictured). The project, which is at Hanworth Trading Estate in the London Borough of Hounslow, will provide a 50,000 square feet DIY unit for Selco with seven associated speculative smaller units. GSS's client is Sisk Marlin Developments Ltd. The project is scheduled for completion by Spring 2012.



At the same time the final phase of a new £2.35 million warehouse and office scheme, which comprises two further units, has now started on site at the Kings Heath Industrial Estate in Northampton. The project, which will give a substantial boost to the area, has been designed by GSS. The first phase, which was completed in May, resulted in a new headquarters building and warehousing for Tennant UK Ltd. The site dates from the 1960's and in order to make way for the new development some older buildings have been demolished.

The scheme features a high quality design with a mixture of flat panel and microrib cladding panels, profiled cladding and feature tinted glazing, with curtain walling. By setting back the elevations it has been possible to allow space for vehicles on site as well providing extra off-road parking.



Kimbolton School Bursar Edward Valletta with David Allsop in the extended dining hall.



The interior of the new extension.



The exterior of the extended dining hall with the clock tower to the rear.

Kimbolton School's Dining Hall is extended

A dining hall extension has recently been completed at Kimbolton School in Huntingdonshire. It comprises a courtyard infill extension to the Mews building that dates from around 1870 and which houses both music rehearsal rooms and the main school dining hall. The project provides additional seating and a new kitchen servery which has significantly relieved the pressure previously experienced by the school at lunch times.

Key elements of the design include a front façade of structural glazing, a lead-effect roof containing a glazed clerestory, and reinstatement of two chimneys to the gable walls either side of the clock tower.

The GSS partner-in-charge was David Allsop, supported by architect Paul Harkin and technologist Robert Grewcock. The main contractor was R G Carter.

New football stadium marks first phase of Corby masterplan



GSS partner Tom Lyons with project architect Paul Harkin at the new football stadium.

The first phase of the masterplan for the redevelopment of the sports complex at Rockingham Triangle in Corby has now been delivered. At the heart of the development is the new football stadium for Corby Town Football Club, with accommodation for nearly 3,900 spectators, including seating for approximately 570 in a new stand. At the stadium's official opening, GSSArchitecture was applauded for their work on the scheme.

GSSArchitecture, with partner-in-charge Tom Lyons and project architect Paul Harkin, have been developing the detailed masterplan on behalf of Corby Borough Council. There are long-term plans to replace some of the other facilities with new buildings while there'll be upgrades to some existing buildings plus some additional amenities.

Externally there are six new floodlit tennis courts, and a tennis practice wall – all to LTA standards. Existing facilities for local league football and Gaelic football have been retained.

Moulton College's new social building makes good progress

Good progress is being made on a £7 million Welfare & Social Centre at Moulton College, Northampton, where the main structure has now been completed. The scheme has been designed by GSS, who are also undertaking the quantity surveying and project management.

GSS partner Ian Bray explained, "This attractive new building at the heart of the college will enable all the leisure and welfare facilities to be brought together under one roof. The wide range of facilities will include an area for social functions, a student shop, a large dining hall, kitchen and servery, bar facilities, and residents' and visitors' lounges. There will also be informal learning spaces with the latest IT equipment and specialist support areas for higher education students. Welfare support will be well provided for by a medical centre, chaplaincy and counselling spaces."

College Principal Stephen Davies said, "This latest project is part of the overall redevelopment of Moulton College, and will provide a further boost to our already outstanding and impressive facilities."



Left to right are GSS partner Ian Bray, Moulton College Principal Stephen Davies, GSS partner Tom Lyons and Watson & Cox MD Bill Gardiner.

Wellingborough-based Watson & Cox are the main contractors. The new building is on schedule to be completed early next year.

GSS has been working with Moulton College for over fifteen years on a multi-million pound programme to redevelop all satellite centres and the main Moulton campus. Another project which is due for completion shortly is a new Sports Injury and Rehabilitation Centre at Moulton College's Pitsford Centre. We hope to feature this in the next issue of GSS Review.



The entrance and reception are contained in an extremely colourful hub.

£6m Luton Children's Centre is opened

One of the largest Children's Centres to be built in this country has opened in Luton. The £6 million project was designed by GSS and houses substantial child-focused clinical care facilities for the whole town.

Partner-in-charge Tom Lyons explained, "The Marsh Farm Children's Centre provides an important regeneration boost to this part of the town. There is a 65-place nursery and day care facilities, with indoor and outdoor play areas. A large two storey wing provides a home for local healthcare and social service professionals, and there are a number of clinical rooms, along with counselling and occupational therapy facilities."

The GSS design team included project architect and team leader Paul Harkin and architectural technologist Amanda Burns. The client was Wates Construction Ltd on behalf of the Local Education & Community Partnership, which comes under the umbrella of Luton Borough Council.



Parents arrive to collect their children from the nursery.



The outside play area is very well equipped.



One of the medical consulting rooms.

New village hall is looking good

A new building designed by GSS has been completed for the Great Oakley Village Hall Institute. It features a large multi-purpose hall, meeting room, kitchen, toilets and lots of storage space for the various user groups.

The main client and funding provider was Corby Borough Council, and the overall value was around three-quarters of a million pounds. The main contractor was Jeakins Weir of Corby, the structural engineers were JPP Consulting of Walgrave, the services engineers were DGA Consulting Engineers of Coalville, and the quantity surveyor was YMD Boon Ltd of Market Harborough.

The GSS design team was led by partner-in-charge Will Assheton, who was supported by Sally Hewins and James Webster.



Corby Manor House rises from the ashes



The Manor House after the structure had been made safe following the fire.

A building which was completely gutted by a devastating fire in 2009 has been completely restored and converted into a School of Catering for Tresham College.

Corby Manor House, which is off Cottingham Road, was originally designed by GSS's founder, John Alfred Gotch, and completed in 1905. GSS was initially awarded the complex task of

masterminding the £2.4 million restoration by Corby Borough Council. As well as acting as architects, GSS have also undertaken the quantity surveying and project management. When new uses for the restored building were being discussed Tresham College came on board, and further works were undertaken to provide the college with magnificent new teaching facilities for the catering trades.



GSS's Jonathan Kilner with partner Will Assheton outside the restored Manor House.

GSS partner Will Assheton explained, "We have considerable experience of restoring fire-damaged buildings, and previous examples include the British Pepper and Spice factory, the Thatched Pavilion at Wellingborough School and offices for the Griggs & Co. This latest restoration - Corby Manor House - provided a very challenging task and involved a number of skilled craftsmen, but it's one that we are used to."

Work starts on £4m school amalgamation



GSS team leader Chris Chapman (left) discusses the project with technologist Ben Hamblin.

Work has started on a £4 million project to amalgamate Hardwick junior and infant schools in Wellingborough, Northamptonshire. The new school will be known as Olympic Primary School after Olympic Way, which is the main route into the school.

The project, which has been designed by GSS, will see the existing infant school building being refurbished, with a large extension to this building on the school playing field at the northern end of the site. This will then provide a single school building of some 2,100 square metres.

The separate junior school building at the southern end of the site will be demolished to make way for a new formal playing field, adjacent to the existing car park. In addition there will be hard and soft exterior play areas as well as habitat areas. The new primary school will have a two-form entry with a total of 420 pupils. As well as architects, GSS are acting as lead consultants, contract administrators and cost managers. The client is Lend Lease on behalf of Northamptonshire County Council.

The main contractor is G F Tomlinson of Derby, and the project is scheduled to be completed by the end of September 2012. GSS has previously undertaken a number of other school amalgamations across the country.

£6m Stamford sports centre is taking shape



GSS project architect Paul Harkin checks progress on site.

The complex steel framework has now been completed for a new £6 million sports centre at Stamford School, Lincolnshire.

GSS's project architect Paul Harkin explained, "The new sports building will incorporate a 25-metre six-lane swimming pool together with a gymnasium, fitness suite and extensive changing facilities for both indoor and outdoor activities. There will also be a large south-facing spectator terrace covered by an overhanging roof. This will give people a prime view of the main sports pitches. Dedicated spectator seating is to be provided for events in the swimming pool. The new building will also include office space, additional teaching rooms, toilets and a medical room. It is due to be completed early next spring."

This is the second phase of a redevelopment master plan by GSS

and will see all of the school's sports facilities located next to their extensive playing fields. GSS has previously undertaken several other projects at Stamford School. These include a research and learning centre and an atrium that incorporated a new school entrance for visitors, new dining facilities with a stainless steel servery, and a lecture theatre with flexible banks of seating.

GSS's partner-in-charge is Will Assheton. GSS are also acting as quantity surveyors and project managers, with associate Phil Morgan heading the team. The main contractor is Clugston Construction Ltd, which is part of the privately owned Clugston Group whose head office is in North Lincolnshire.

- GSS has been appointed to undertake the design of Oakley Vale 2 Primary School in Corby. The client is Lend Lease on behalf of Northamptonshire County Council.
- A major key worker and social housing project has started on site in Yeovil, Somerset. The £8 million project has been designed by GSS's Bristol office for Yarlington Housing Group.
- LearnSpace, a new education research centre designed by GSS and which has been funded by Partnership for Schools, has recently opened in Corby. We hope to feature it in the next issue of GSS Review.
- It is proposed to undertake internal remodelling at North Hertfordshire College to accommodate a Hair & Beauty Department.
- A church porch extension is currently under construction at St Mark's Church at Bilton in Warwickshire to provide toilets and other facilities for worshippers and visitors. A similar project has also been completed at St Mary's Church, Clifton-on-Dunsmore.
- The first phase of a £16 million remodelling has been completed at Lealands Sports College in Luton. This includes a new covered courtyard which will act as a hub to the remainder of the school's facilities. The final phases are due to be completed by January 2013. This project has been undertaken as part of the Building Schools for the Future programme.
- Additional hostel accommodation is being designed for the YMCA at Milton Keynes as part of a ProHelp scheme for Business in the Community.
- A new entrance has been completed for St Mary's Catholic Primary School in Churchdown, Gloucester.
- Construction is well under way on a £15 million student housing project at Harcourt Hill for Oxford Brookes University. This will provide accommodation for 316 students in two large blocks. There are individual ensuite rooms with well-equipped shared kitchens.
- In early November GSS sponsored an art exhibition in Leeds in aid of St Gemma's Hospice, a well known and long-established charitable organisation.
- A refurbishment project has been completed at King James School, Knaresborough.
- GSS partner Mark Stevens, who is Chair of Bristol ProHelp, chaired a Partnership Conference in the city in mid-October. GSS is currently undertaking a number of voluntary ProHelp projects in the Bristol region.
- A barn extension and associated works are being undertaken for a private client in Holsworthy, Devon.
- A number of GSS's men will be sprouting moustaches throughout November to raise awareness and sponsorship funds for men's health, and specifically prostate and testicular cancers. Details of the "Movember" campaign are at <http://uk.movember.com>.



News in brief

Major conservation project for Rugby School's Chapel



GSS partner Will Assheton in the Rugby School Chapel.

A major conservation scheme has recently been completed at Rugby School's Chapel, where the ornate plaster ceiling has been repaired and redecorated. At the same time new lighting has been installed. The imposing Grade 1-listed building was designed by William Butterfield in 1872. The half million pound conservation and lighting project was overseen by GSS partner-in-charge Will Assheton, who himself attended Rugby School.

Will explained, "It was decided a little while ago that the chapel lighting needed to be upgraded, and after some lighting tests it immediately became apparent that the decorative plaster ceiling, parts of which had become loose and were coming away, was in need of urgent redecoration and repair. This necessitated erecting a substantial scaffolding platform throughout the chapel so that the conservators could undertake their highly-skilled restoration work. The new interior lighting now enables the chapel to be seen

as it has never been seen before, while new exterior lighting also provides dramatic highlights to parts of the chapel and some of the surrounding areas."

The main contractors were Steele & Bray, while Hirst Conservation undertook the repairs and redecoration of the plaster ceiling. The electrical engineering consultants were Edmond Shipway, and the lighting designers were DPA. GSS also acted as quantity surveyors and CDM co-ordinators.

Hospital projects will soon be completed

Work is under way on a substantial remodelling of Scarborough General Hospital's ITU Department to provide a dedicated isolation ward with associated facilities. The works will include the relocation of the anaesthetists' department so that they are more closely located with the operating theatres which they support. The overall plan includes comprehensive works in order to improve patient experience and to enhance the available services.

GSS is also working on improved facilities to the Radiography Department, and this will feature a new Mammography Scanning Suite as well as an Ultrasound Room. There will also be an attractive new reception and patient waiting area.

GSS's Shaun Wilson (right) discussing building works in the new isolation ward with Chris Adams of Redworth Associates.



Both projects are due to be completed in November, with a total contract value of £552,000.

GSS's Harrogate office has been working closely with the Scarborough and NE Yorkshire NHS Trust over the past year to develop a strategy for improving facilities in support of a number of the hospital's core services. The Trust has also appointed GSS to undertake a feasibility study for the remodelling of the entrance and the provision of a community pharmacy at Bridlington and District Hospital.

GSSARCHITECTURE

• Chartered Architects • Project Managers • Cost Managers

Partners

David A Allsop BA DipArch RIBA
William F Assheton BA(Hons) BArch RIBA
Ian S Bray BSc(Hons) MRICS
Brian L Gotch BSc FRICS
Jonathan D Hunter BA(Hons) ArchTech MCAT MCIOB FFB
Thomas G Lyons BA DipArch DipAP RIBA
Michael A Magri BA(Hons) DipArch RIBA
Mark Stevens BSc(Hons) CEnv FRICS FFB MCMI

Consultant

John F Davis FRICS

Offices

35 Headlands Kettering Northamptonshire NN15 7ES	Eden Office Park 73 Macrae Road Ham Green Bristol BS20 0DD	2 Spencer Parade Northampton Northamptonshire NN1 5AA	The Tower Studio Fourth Avenue Hornbeam Park Harrogate HG2 8QT
T:01536 513165	T:01275 378310	T:01604 631919	T:01423 815121

www.gssarchitecture.com

gss@gotch.co.uk